

# UM01516

## LoRaWAN Modem Driver Installation Guide

---

V1.1

### Document information

| Info            | Content   |
|-----------------|---|
| <b>Keywords</b> | <i>LoRaWAN, USB CDC</i>   |
| <b>Abstract</b> | This doc shows how to install Windows driver for LoRaWAN modem (RHF3M076) |

### Content

|   |   |
|---|---|
| Content.....                                      | 2 |
| Figures .....                                     | 3 |
| 1 Preface .....                                   | 1 |
| 2 How To .....                                    | 2 |
| 2.1 Open Device Manager .....                     | 2 |
| 2.2 Find LoRaWAN modem and install driver .....   | 2 |
| 2.3 Browse my computer for driver software .....  | 3 |
| 2.4 Confirm to install this driver software ..... | 4 |
| 2.5 Finish .....                                  | 5 |
| 3 FAQ .....                                       | 7 |
| Revision.....                                     | 8 |

### Figures

|   |   |
|---|---|
| Figure 2-1 Device Manager.....                            | 2 |
| Figure 2-2 Device RisingHF LoRaWAN Modem.....             | 2 |
| Figure 2-3 Install Local Driver Manually .....            | 3 |
| Figure 2-4 Locates Driver Directory .....                 | 3 |
| Figure 2-5 Ignore Windows Security Warning .....          | 4 |
| Figure 2-6 Installing Driver.....                         | 4 |
| Figure 2-7 Installation Finish .....                      | 5 |
| Figure 2-8 LoRaWAN Modem is Ready to Use .....            | 5 |
| Figure 2-9 Enjoy LoRaWAN Modem with Serial Terminal ..... | 6 |
| Figure 3-1 STM Virtual COM Port .....                     | 7 |

## 1 Preface

---

LoRaWAN modem<sup>1</sup> is a plug and play device. It is a standard USB CDC<sup>2</sup> device, for Linux or MAC operating system, there is no driver needed; user could control it just like any other USB CDC device. But for Windows system, a driver is necessary in order to start play with LoRaWAN modem. This guide only shows user how to install driver for LoRaWAN modem, for command usage please refer to PS01509<sup>3</sup>.

---

<sup>1</sup> RisingHF part number of LoRaWAN modem is RHF3M076, customer could use this part number to take order

<sup>2</sup> USB Communication Device Class

<sup>3</sup> RHF-PS01509: LoRaWAN AT Command Specification

## 2 How To

### 2.1 Open Device Manager

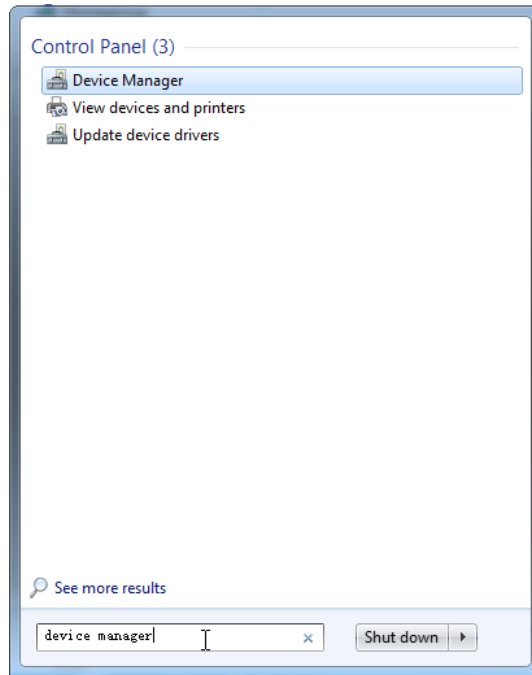


Figure 2-1 Device Manager

### 2.2 Find LoRaWAN modem and install driver

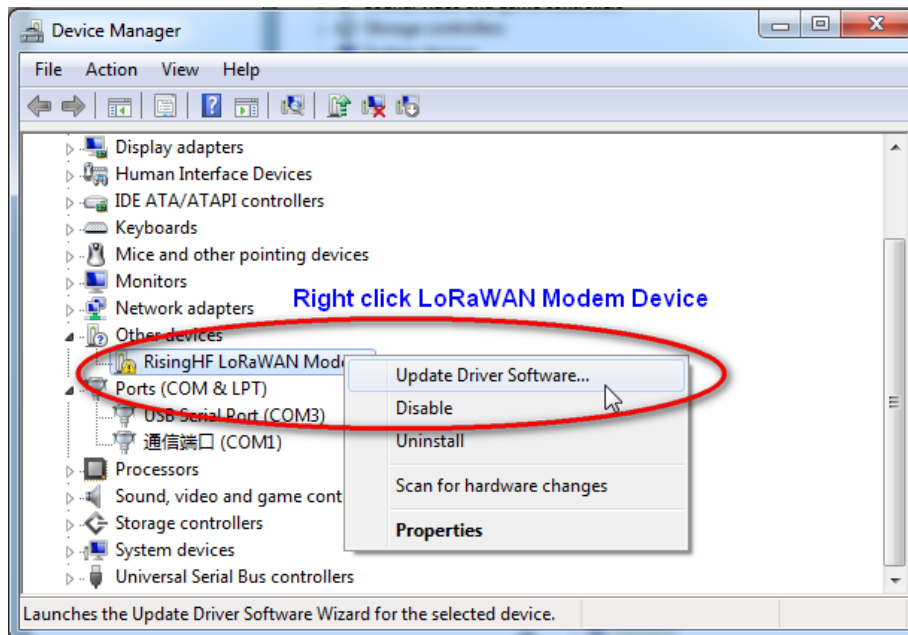


Figure 2-2 Device RisingHF LoRaWAN Modem

### 2.3 Browse my computer for driver software

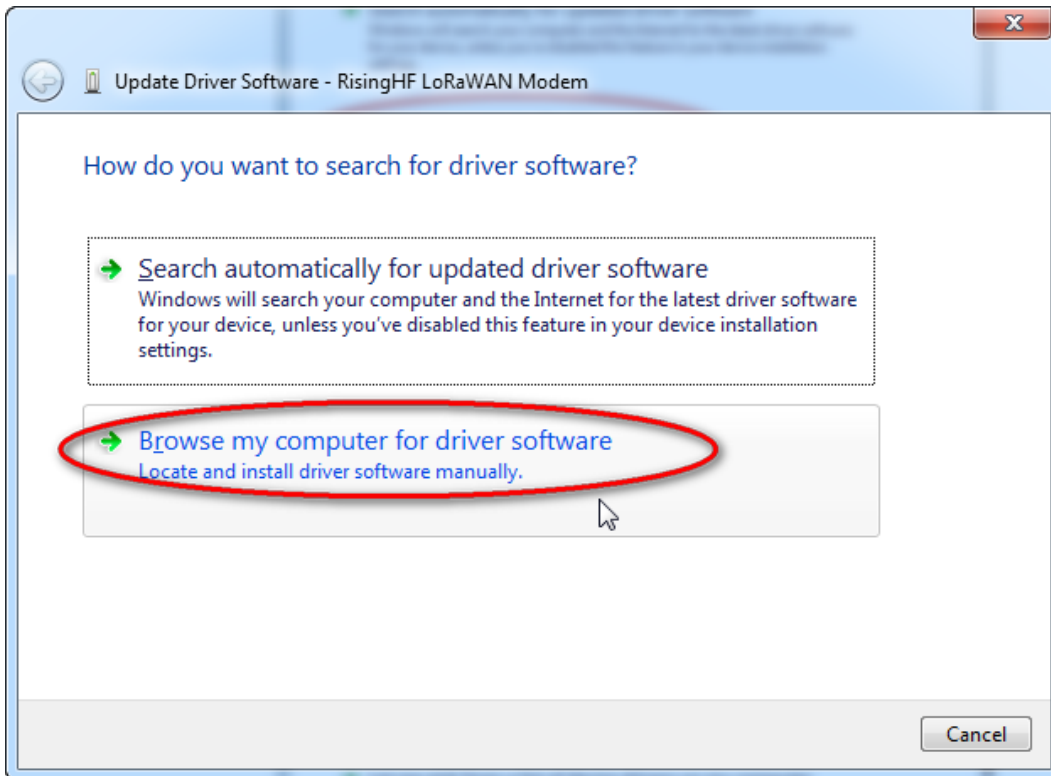


Figure 2-3 Install Local Driver Manually

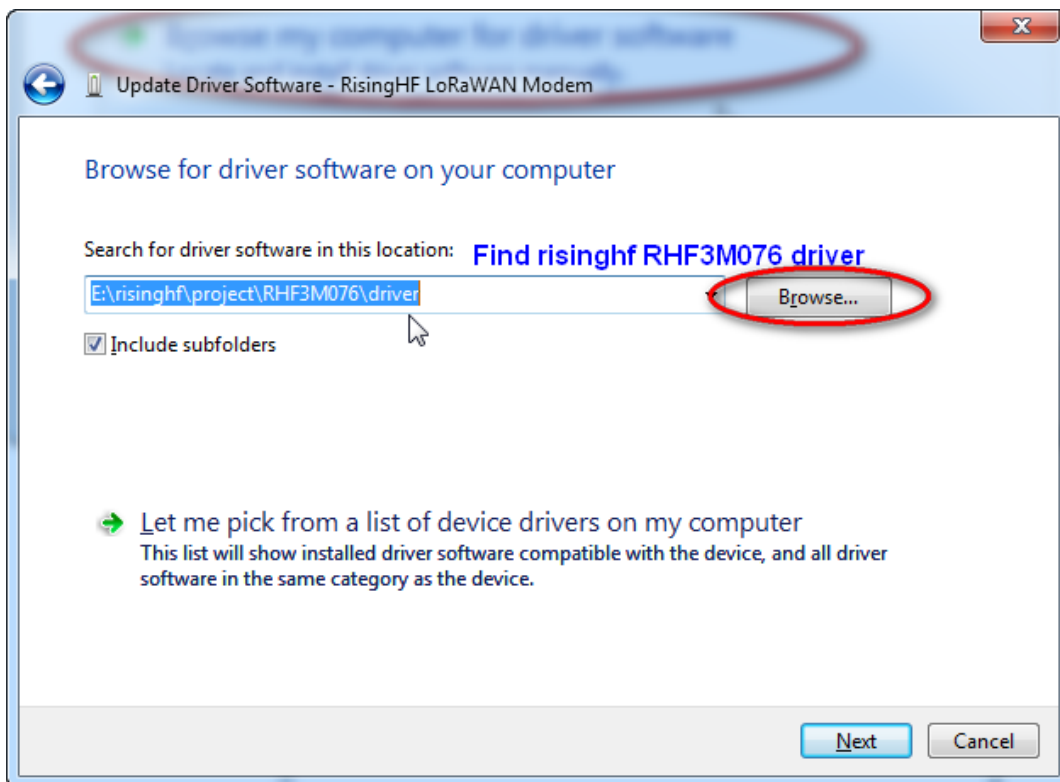


Figure 2-4 Locates Driver Directory

## 2.4 Confirm to install this driver software

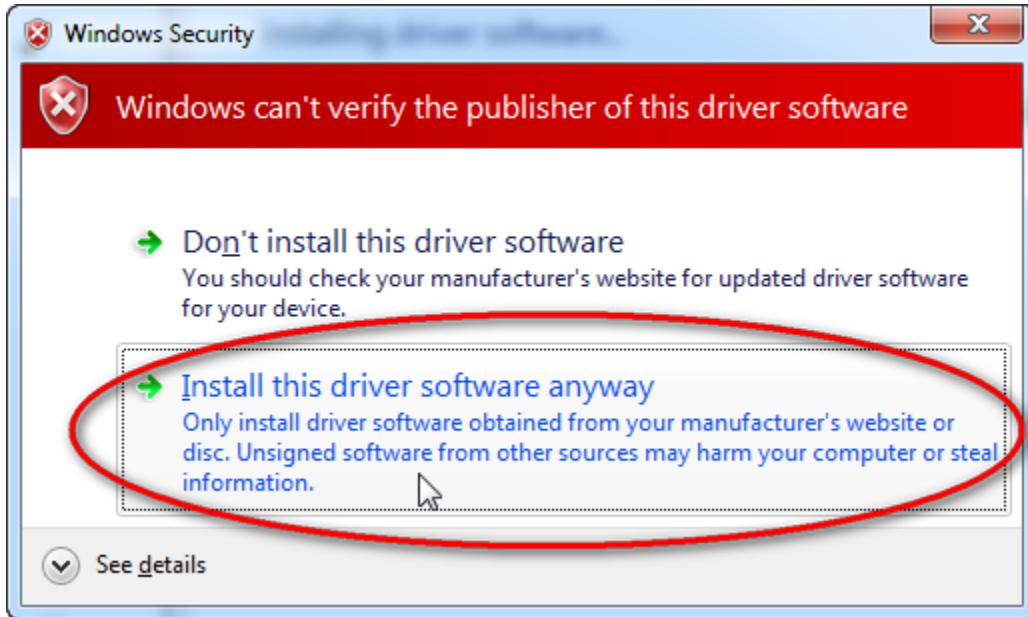


Figure 2-5 Ignore Windows Security Warning<sup>4</sup>

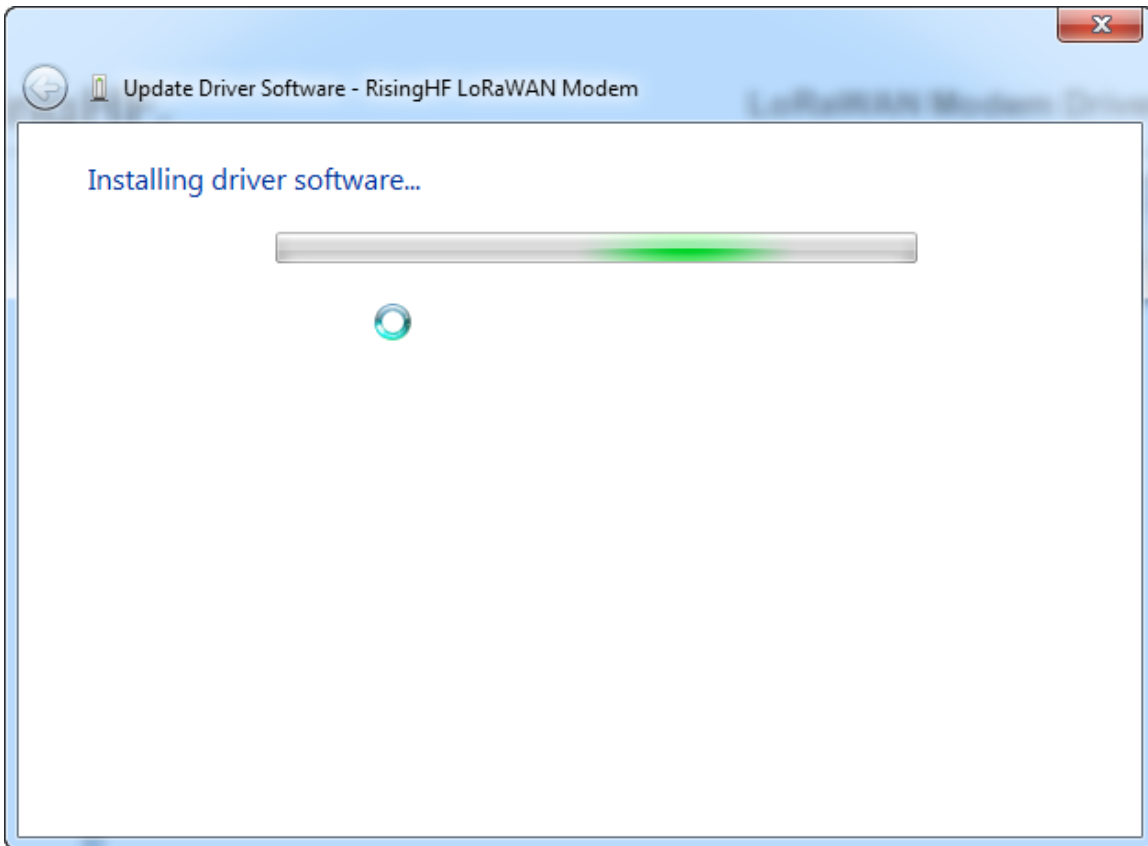


Figure 2-6 Installing Driver

<sup>4</sup> RisingHF LoRaWAN Modem will never hurt your PC

### 2.5 Finish

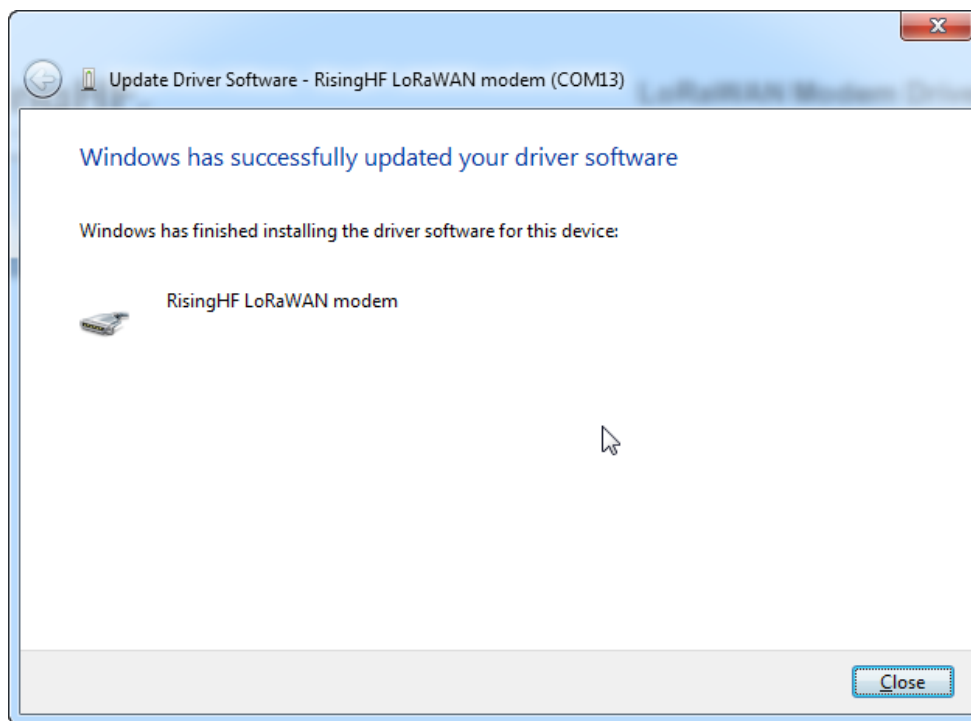


Figure 2-7 Installation Finish

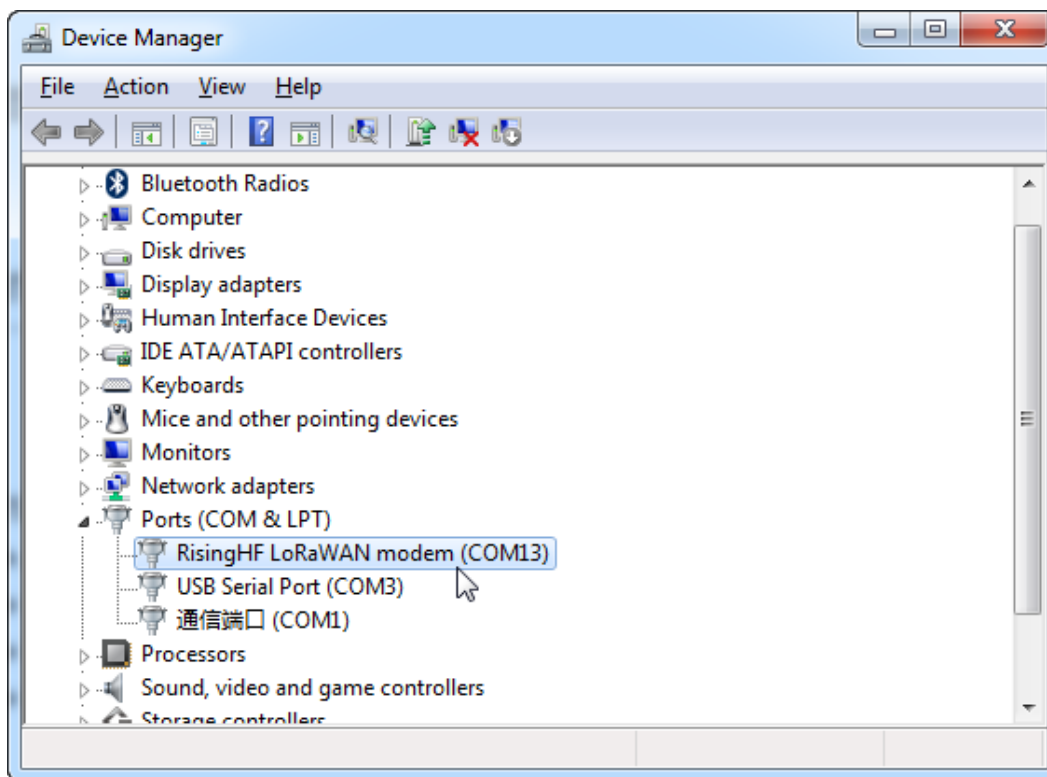


Figure 2-8 LoRaWAN Modem is Ready to Use



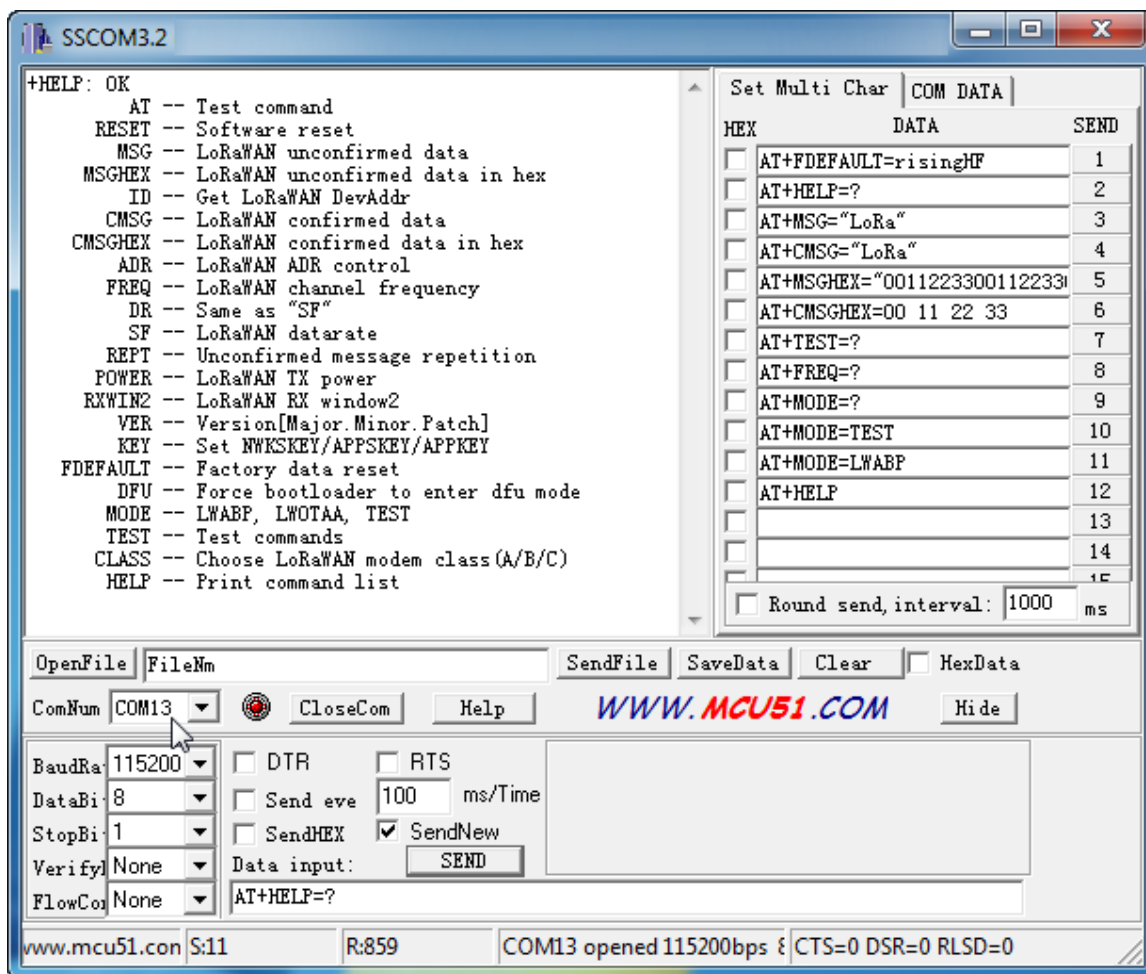
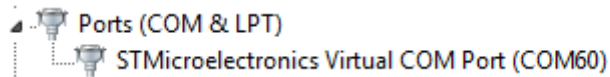


Figure 2-9 Enjoy LoRaWAN Modem with Serial Terminal

### 3 FAQ

---

#### 1. Why my LoRaWAN Modem is recognized as "STM Virtual COM" device?



**Figure 3-1 STM Virtual COM Port**

In some cases, your modem may be recognized as STM Virtual COM Port, this is normal, as LoRaWAN modem uses STM32 MCU and ST's CDC VID and PID. This does not affect the performance and any feature of the modem.

### Revision

V1.1 2015-07-12  
+ Add FAQ

V1.0 2015-04-25  
+ First Release

### **Please Read Carefully:**

Information in this document is provided solely in connection with RisingHF products. RisingHF reserve the right to make changes, corrections, modifications or improvements, to this document, and the products and services described herein at any time, without notice.

All RisingHF products are sold pursuant to RisingHF's terms and conditions of sale.

Purchasers are solely responsible for the choice, selection and use of the RisingHF products and services described herein, and RisingHF assumes no liability whatsoever relating to the choice, selection or use of the RisingHF products and services described herein.

No license, express or implied, by estoppel or otherwise, to any intellectual property rights is granted under this document. If any part of this document refers to any third party products or services it shall not be deemed a license grant by RisingHF for the use of such third party products or services, or any intellectual property contained therein or considered as a warranty covering the use in any manner whatsoever of such third party products or services or any intellectual property contained therein.

UNLESS OTHERWISE SET FORTH IN RISINGHF'S TERMS AND CONDITIONS OF SALE RisingHF DISCLAIMS ANY EXPRESS OR IMPLIED WARRANTY WITH RESPECT TO THE USE AND/OR SALE OF RisingHF PRODUCTS INCLUDING WITHOUT LIMITATION IMPLIED WARRANTIES OF MERCHANTABILITY, FITNESS FOR A PARTICULAR PURPOSE (AND THEIR EQUIVALENTS UNDER THE LAWS OF ANY JURISDICTION), OR INFRINGEMENT OF ANY PATENT, COPYRIGHT OR OTHER INTELLECTUAL PROPERTY RIGHT.

RISINGHF PRODUCTS ARE NOT DESIGNED OR AUTHORIZED FOR USE IN: (A) SAFETY CRITICAL APPLICATIONS SUCH AS LIFE SUPPORTING, ACTIVE IMPLANTED DEVICES OR SYSTEMS WITH PRODUCT FUNCTIONAL SAFETY REQUIREMENTS; (B) AERONAUTIC APPLICATIONS; (C) AUTOMOTIVE APPLICATIONS OR ENVIRONMENTS, AND/OR (D) AEROSPACE APPLICATIONS OR ENVIRONMENTS. WHERE RISINGHF PRODUCTS ARE NOT DESIGNED FOR SUCH USE, THE PURCHASER SHALL USE PRODUCTS AT PURCHASER'S SOLE RISK, EVEN IF RISINGHF HAS BEEN INFORMED IN WRITING OF SUCH USAGE, UNLESS A PRODUCT IS EXPRESSLY DESIGNATED BY RISINGHF AS BEING INTENDED FOR "AUTOMOTIVE, AUTOMOTIVE SAFETY OR MEDICAL" INDUSTRY DOMAINS ACCORDING TO RISINGHF PRODUCT DESIGN SPECIFICATIONS. PRODUCTS FORMALLY ESCC, QML OR JAN QUALIFIED ARE DEEMED SUITABLE FOR USE IN AEROSPACE BY THE CORRESPONDING GOVERNMENTAL AGENCY.

Resale of RisingHF products with provisions different from the statements and/or technical features set forth in this document shall immediately void any warranty granted by RisingHF for the RisingHF product or service described herein and shall not create or extend in any manner whatsoever, any liability of RisingHF.

RisingHF and the RisingHF logo are trademarks or registered trademarks of RisingHF in various countries.

Information in this document supersedes and replaces all information previously supplied.

The RisingHF logo is a registered trademark of RisingHF. All other names are the property of their respective owners.

© 2015 RISINGHF - All rights reserved

<http://www.risinghf.com>